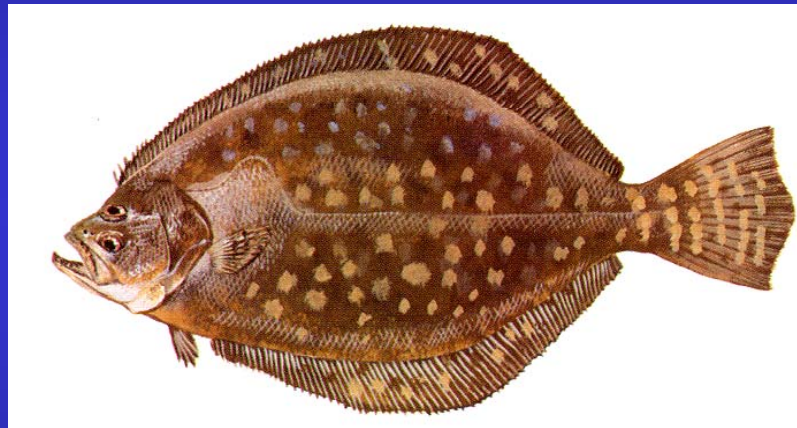


Interim Management Measures for Southern Flounder



Chris Batsavage, NCDMF



Overview

- Background
- Options for Interim Management Measures
- Management Scenarios
- Options for Stock Rebuilding & Implementing Management Measures
- DMF Recommendation



Background

- Harvest reductions needed to rebuild SSB, end overfishing
 - Interim management measures to implement harvest reductions before completion of Amendment 1 of FMP
- Interim measures based on achieving SPRs of 25%, 30%, & 35%
- Overall harvest reduction of 20.5% (SPR 25%), 26.5% (SPR 30%) or 32.3% (SPR 35%)



Management Measures Options

- Static Quota
- Dynamic Quota
- Limited Entry
- 15" Minimum Size Limit
- Season Closures
- Trip/Creel Limits



Management Measures Options

- Static Quota
- Dynamic Quota
- Limited Entry
- 15" Minimum Size Limit
- Season Closures
- Trip/Creel Limits



15" Minimum Size Limit

Advantages

- Increase long-term SSB
- Reduces F
- More fish get to spawn
- Applied to rec. & comm. fisheries

Disadvantages

- Cannot be implemented in 2009—gear changes
- Increased discards
- Fisheries & areas affected differently
- Compliance issues with higher size limit



Season Closures

Advantages

- Reduces F
- Could be implemented in 2009
- Can be applied to rec. & comm. fisheries

Disadvantages

- Different effects on fisheries
- Enforcement
- Increased discards
- Recoupment



Trip/Creel Limits

Advantages

- Reduces effort & harvest
- Possible to implement in 2009
- Potential management option for rec. fisheries

Disadvantages

- Not a viable option for comm. fisheries
- Could increase discards
- Not a stand-alone management measure



Comm. Management Scenarios

14"

- Closed season extended or modified
- Early season closures the longest
- Fall closures the shortest

15"

- Closed season not required for 25% SPR
- Closed season required for 30% & 35% SPR

Season Closure Impacts

- Late: Pound Net
- Fall: Gill Net & Pound Net
- Summer: Gig
- Late summer/early fall: all fisheries affected



Rec. Management Scenarios

14"

- Closed season required for most scenarios
- Early & late season closures the longest
- Summer closures the shortest
- Higher creels = longer season closures

15"

- Closed season required for some 25% SPR scenarios
- Closed season required for most 30% & 35% SPR scenarios
- Closed seasons shorter than for 14" scenarios



Stock Rebuilding Management Options

- Achieving the threshold at $SPR_{25\%}$ by 2015
- Achieving the target $SPR_{35\%}$ by 2015



DMF Recommendation

Implement management measures
that achieve an SPR of 25% by 2015



Implementation Options

- Implement interim measures in 2009
- Implement interim measures in 2010
- Do not implement interim measures



DMF Recommendation

Implement interim management
measures by January 1, 2010



Interim Management Options for 2009

Commercial

- Summer and/or fall season closure

Recreational

- Summer and/or fall season closure
- Size limit increase, creel limit decrease
 - Partial year size/creel limit changes = smaller harvest reduction

